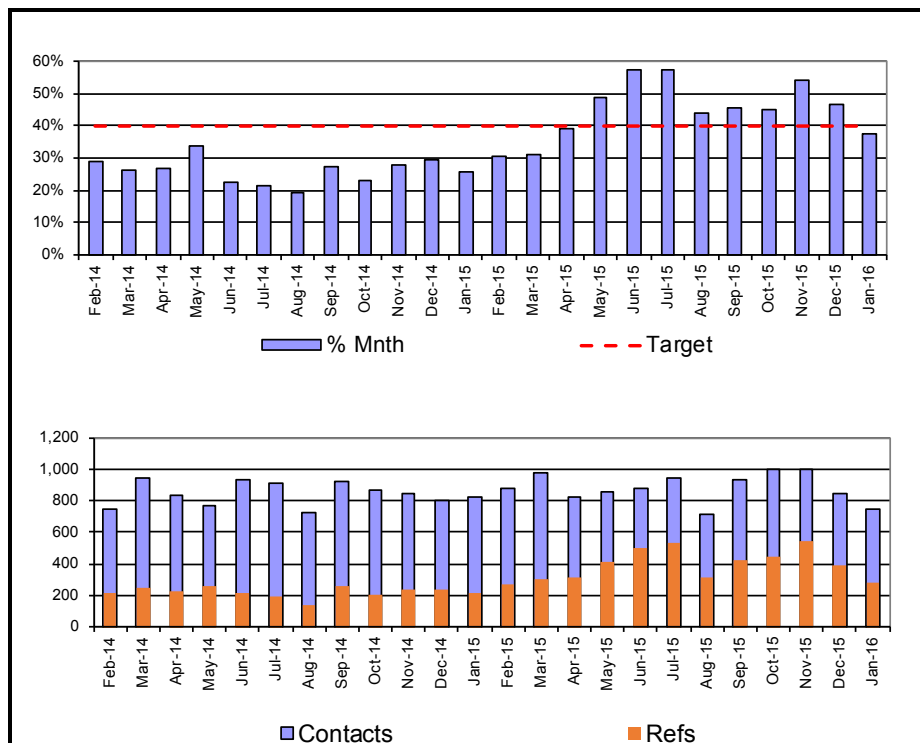


Chart 1

**Number of contacts and % going on to referral** **Jan 2016**



Month	Contacts	Refs	% Mnth	% YTD	Target	Var.	RAG
Feb-14	750	217	28.9%	27.1%	40.0%	-12.9%	A
Mar-14	947	249	26.3%	27.0%	40.0%	-13.0%	A
Apr-14	831	221	26.6%	26.6%	40.0%	-13.4%	A
May-14	767	260	33.9%	30.1%	40.0%	-9.9%	G
Jun-14	928	210	22.6%	27.4%	40.0%	-12.6%	A
Jul-14	913	194	21.2%	25.8%	40.0%	-14.2%	A
Aug-14	728	140	19.2%	24.6%	40.0%	-15.4%	A
Sep-14	927	254	27.4%	25.1%	40.0%	-14.9%	A
Oct-14	872	201	23.1%	24.8%	40.0%	-15.2%	A
Nov-14	849	237	27.9%	25.2%	40.0%	-14.8%	A
Dec-14	805	237	29.4%	25.6%	40.0%	-14.4%	A
Jan-15	821	213	25.9%	25.7%	40.0%	-14.3%	A
Feb-15	874	269	30.8%	26.2%	40.0%	-13.8%	A
Mar-15	976	303	31.0%	26.6%	40.0%	-13.4%	A
Apr-15	818	319	39.0%	39.0%	40.0%	-1.0%	G
May-15	860	418	48.6%	43.9%	40.0%	3.9%	G
Jun-15	881	505	57.3%	48.5%	40.0%	8.5%	G
Jul-15	942	538	57.1%	50.8%	40.0%	10.8%	A
Aug-15	714	314	44.0%	49.7%	40.0%	9.7%	G
Sep-15	934	426	45.6%	48.9%	40.0%	8.9%	G
Oct-15	997	448	44.9%	48.3%	40.0%	8.3%	G
Nov-15	1000	539	53.9%	49.1%	40.0%	9.1%	G
Dec-15	845	393	46.5%	48.8%	40.0%	8.8%	G
Jan-16	745	278	37.3%	47.8%	40.0%	7.8%	G

<b>YTD:</b>	<b>8,736</b>	<b>4,178</b>	<b>-</b>	<b>47.8%</b>	<b>40.0%</b>	<b>7.8%</b>	<b>G</b>
-------------	--------------	--------------	----------	--------------	--------------	-------------	----------

**CSC Commentary**  
 Performance is within target, and this month there has been further reduction in the number of contacts going onto referrals. However this needs to continue to be closely monitored.

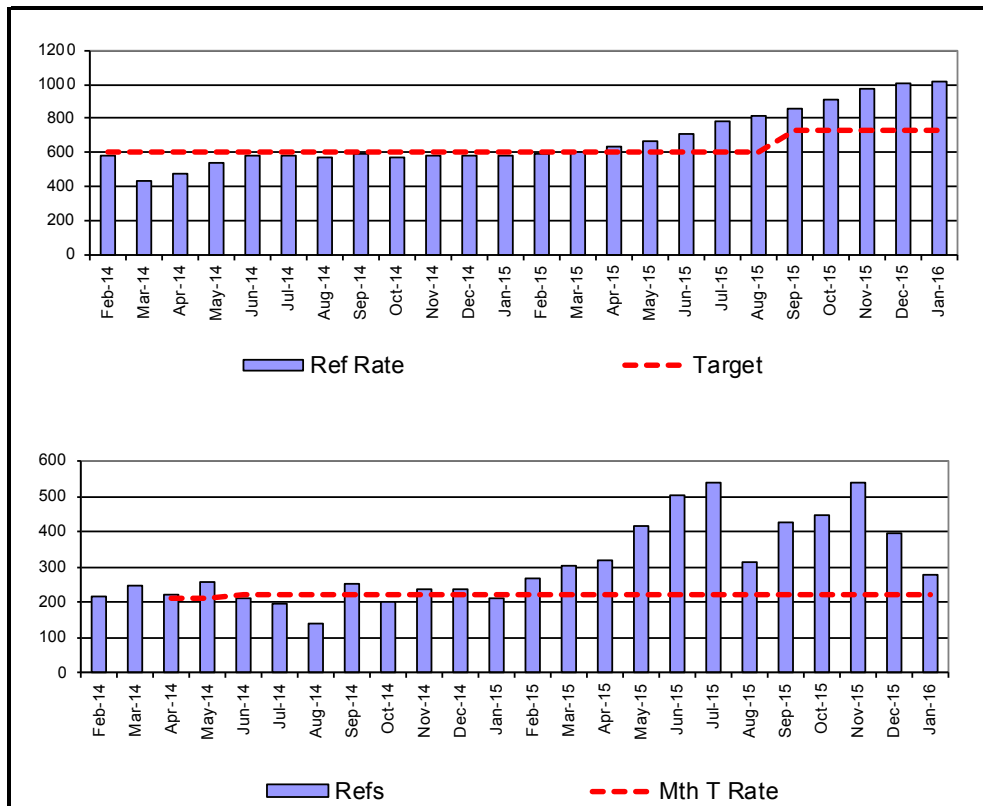
**Definition**  
 The table shows the number of referrals and contacts happening in each given month. The %Mnth column shows in that month alone, the crude conversion of contacts that went onto referrals. The %YTD column shows the year to date percentage of contacts going on to referrals.

<b>G = +/-10%%</b>	<b>A = +/- 10-20%</b>	<b>R = +/- &gt;20%</b>
--------------------	-----------------------	------------------------

111

Chart 2

**Number of Referrals per 10,000 - Rolling 12 Months** **Jan 2016**



Month	Refs	12 Mths	Ref Rate	Mth T Rate	Target	Variance	RAG
Feb-14	217	2608	579.6	211	601.6	-3.7%	G
Mar-14	249	1533	431.1	211	601.6	-28.3%	G
Apr-14	221	1754	480.2	211	601.6	-20.2%	G
May-14	260	2014	538.0	211	601.6	-10.6%	G
Jun-14	210	2224	584.7	220	601.6	-2.8%	G
Jul-14	194	2418	578.2	220	601.6	-3.9%	G
Aug-14	140	2558	568.4	220	601.6	-5.5%	G
Sep-14	254	2678	595.1	220	601.6	-1.1%	A
Oct-14	201	2595	576.7	220	601.6	-4.1%	G
Nov-14	237	2621	582.4	220	601.6	-3.2%	G
Dec-14	237	2632	584.9	220	601.6	-2.8%	G
Jan-15	213	2632	584.9	220	601.6	-2.8%	G
Feb-15	269	2684	596.4	220	601.6	-0.9%	G
Mar-15	303	2739	608.2	220	601.6	1.1%	G
Apr-15	319	2837	630.0	220	601.6	4.7%	G
May-15	418	2995	664.9	220	601.6	10.5%	A
Jun-15	505	3290	706.0	220	601.6	17.4%	R
Jul-15	538	3634	779.8	220	601.6	29.6%	R
Aug-15	314	3808	817.2	220	601.6	35.8%	R
Sep-15	426	3980	854.1	220	730.5	16.9%	R
Oct-15	448	4227	907.1	220	730.5	24.2%	R
Nov-15	539	4529	971.9	220	730.5	33.0%	R
Dec-15	393	4685	1005.4	220	730.5	37.6%	R
Jan-16	278	4750	1019.3	220	730.5	39.5%	R

112

**CSC Commentary**  
 Our referral rate is higher than our regional colleagues and this requires further investigation. The number of contacts moved through to referrals is reflected in this performance target. It is clear in the monthly report that the number of referrals being progressed is decreasing which is due to the direct impact of the extra scrutiny provided by the second Advanced Practitioner in MASH. This has meant that more contacts have been closed/diverted rather than progressing into referrals.

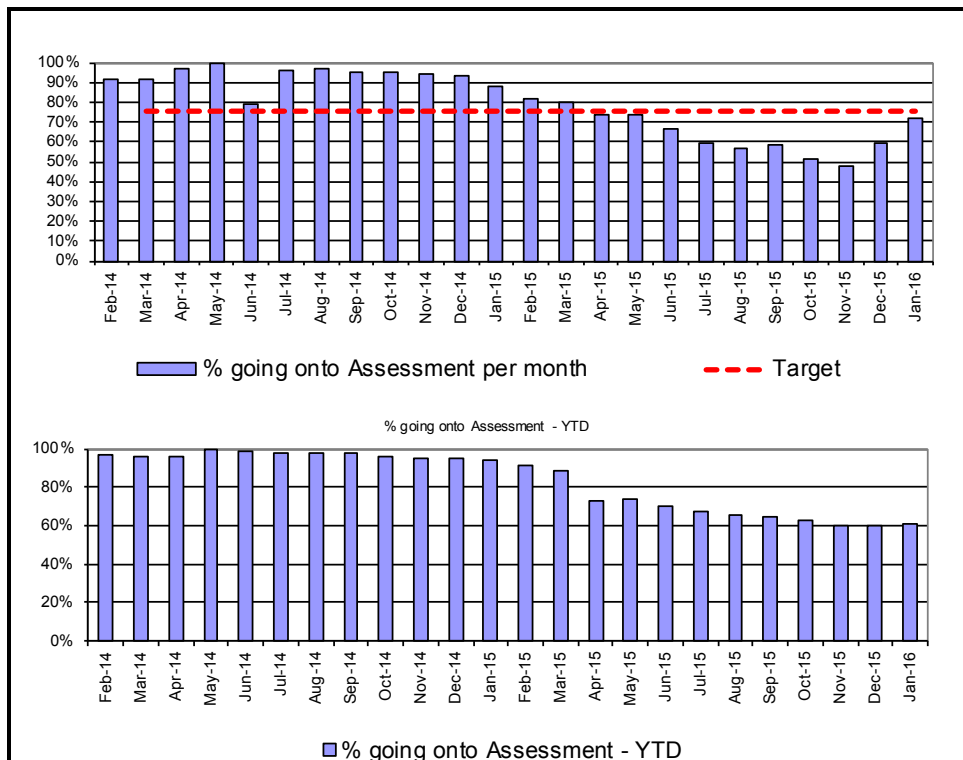
**Definition**  
 Number of referrals (rolling 12 months) divided by the population of 0-17 year olds in Peterborough multiplied by 10,000  
 Population for denominator: 46600

**G <= 730.5**      **A= 730-745**      **R>745**

Year	PCC Result	SN Result	ER Result	ENG Result
2013-14	577.7	730.5		573.0
2014-15	586.6	767.8	437.9	548.3
2015-16				

Chart 3

**Referrals progressing to Single Assessment** **Jan 2016**



Month	Assess	Refs	% assess	% YTD	Target	Var	RAG
Feb-14	199	217	91.7%	96.7%	75.1%	17%	G
Mar-14	227	249	91.2%	96.1%	75.1%	16%	G
Apr-14	215	221	97.3%	96.2%	75.1%	22%	G
May-14	258	260	99.2%	99.2%	75.1%	24%	G
Jun-14	166	210	79.0%	98.5%	75.1%	4%	G
Jul-14	186	194	95.9%	98.0%	75.1%	21%	G
Aug-14	136	140	97.1%	97.8%	75.1%	22%	G
Sep-14	241	254	94.9%	97.5%	75.1%	20%	G
Oct-14	192	201	95.5%	95.6%	75.1%	20%	G
Nov-14	223	237	94.1%	95.5%	75.1%	19%	G
Dec-14	221	237	93.2%	94.9%	75.1%	18%	G
Jan-15	187	213	87.8%	93.8%	75.1%	13%	G
Feb-15	220	269	81.8%	91.2%	75.1%	7%	G
Mar-15	243	303	80.2%	88.4%	75.1%	5%	G
Apr-15	234	319	73.4%	73.4%	75.1%	-2%	G
May-15	309	418	73.9%	73.7%	75.1%	-1%	G
Jun-15	334	505	66.1%	70.6%	75.1%	-9%	G
Jul-15	319	538	59.3%	67.2%	75.1%	-16%	R
Aug-15	179	314	57.0%	65.7%	75.1%	-18%	R
Sep-15	251	426	58.9%	64.5%	75.1%	-16%	R
Oct-15	231	448	51.6%	62.6%	75.1%	-24%	R
Nov-15	256	539	47.5%	60.3%	75.1%	-28%	R
Dec-15	233	393	59.3%	60.2%	75.1%	-16%	R
Jan-16	200	278	71.9%	60.9%	75.1%	-3%	A

<b>YTD:</b>	<b>2,546</b>	<b>4,178</b>	<b>-</b>	<b>60.9%</b>	<b>75.1%</b>	<b>-14.2</b>	<b>R</b>
-------------	--------------	--------------	----------	--------------	--------------	--------------	----------

**CSC Commentary**

Conversions to assessments have increased this month. This is now in Amber and moving closer to the 75% target set. The additional capacity of an Advanced Practitioner is now in place to support the initial screening decisions and this is ensuring a more robust application of threshold.

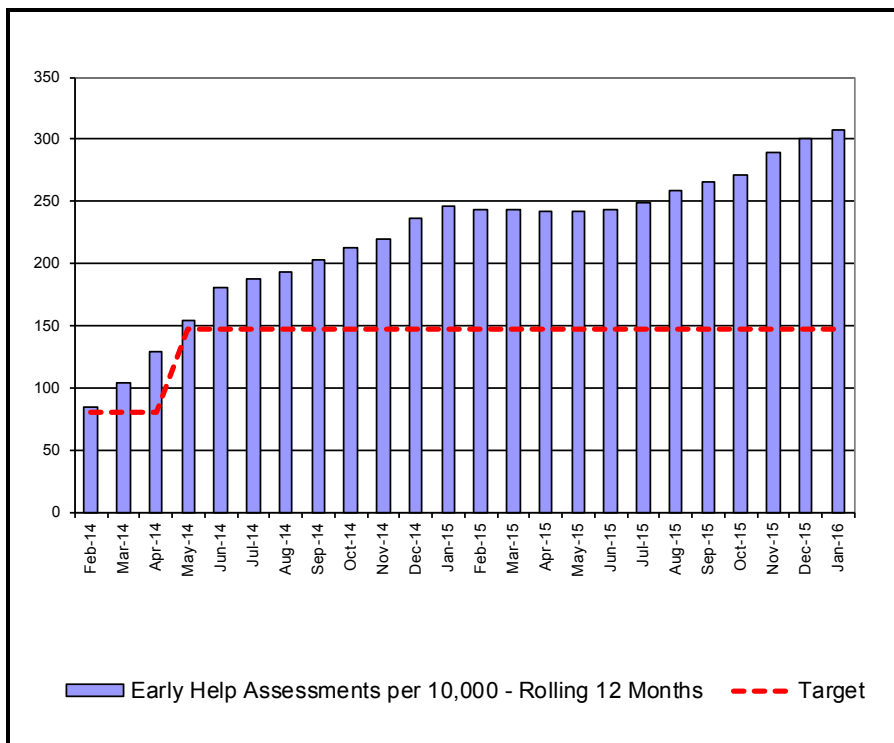
**Definition**  
The percentage of children referred to children's social services departments whose cases go on to single assessments. The numerator is the number of single assessments started in the period recorded on ICMS. The denominator is the number of referrals in the period recorded on ICMS.

<b>G =75.1%</b>	<b>A&gt;70%</b>	<b>R&lt;70%</b>
-----------------	-----------------	-----------------

Year	PCC Result	SN Result	ENG Result
2012-13	84.4%	77.9%	74.4%
2013-14	20.1%	19.3%	19.4%
2014-15	39.0%	16.0%	23.0%

Chart 4

**Early Help Assessments per 10,000 - Rolling 12 Months** **Jan 2016**



Month	EHAs	12 Mths	Rate
Feb-14	90	382	84.9
Mar-14	91	473	105.1
Apr-14	111	584	129.8
May-14	113	697	154.9
Jun-14	120	817	181.6
Jul-14	112	849	188.7
Aug-14	39	870	193.3
Sep-14	64	914	203.1
Oct-14	86	959	213.1
Nov-14	77	992	220.4
Dec-14	94	1064	236.9
Jan-15	113	1110	246.9
Feb-15	72	1092	243.3
Mar-15	96	1097	244.0
Apr-15	101	1087	242.0
May-15	133	1107	242.4
Jun-15	150	1137	244.0
Jul-15	138	1163	249.6
Aug-15	82	1206	258.8
Sep-15	95	1237	265.5
Oct-15	115	1266	271.7
Nov-15	158	1347	289.1
Dec-15	148	1401	300.6
Jan-16	146	1434	307.7

Target	Var.	RAG
80.8	5.1%	G
80.8	30.1%	G
80.8	60.6%	G
147.9	4.7%	G
147.9	22.8%	G
147.9	27.6%	G
147.9	30.7%	G
147.9	37.3%	G
147.9	44.1%	G
147.9	49.0%	G
147.9	60.2%	G
147.9	66.9%	G
147.9	64.5%	G
147.9	65.0%	G
147.9	63.6%	G
147.9	63.9%	G
147.9	65.0%	G
147.9	68.7%	G
147.9	75.0%	G
147.9	79.5%	
147.9	83.7%	
147.9	95.4%	
147.9	103.3%	
147.9	108.1%	

**CSC Commentary**  
 The number of Early Help Assessments completed in November, December and January remains consistently high. Demand for eCAF training from partners is currently exceeding supply and this is something we are addressing. Access to the two Behaviour Panels and 0-5 Early Support Pathway are now insisting upon a completed Early Help Assessment and this is having a positive impact, with some partners previously hesitant to complete EHA's now engaging including a number of health colleagues.

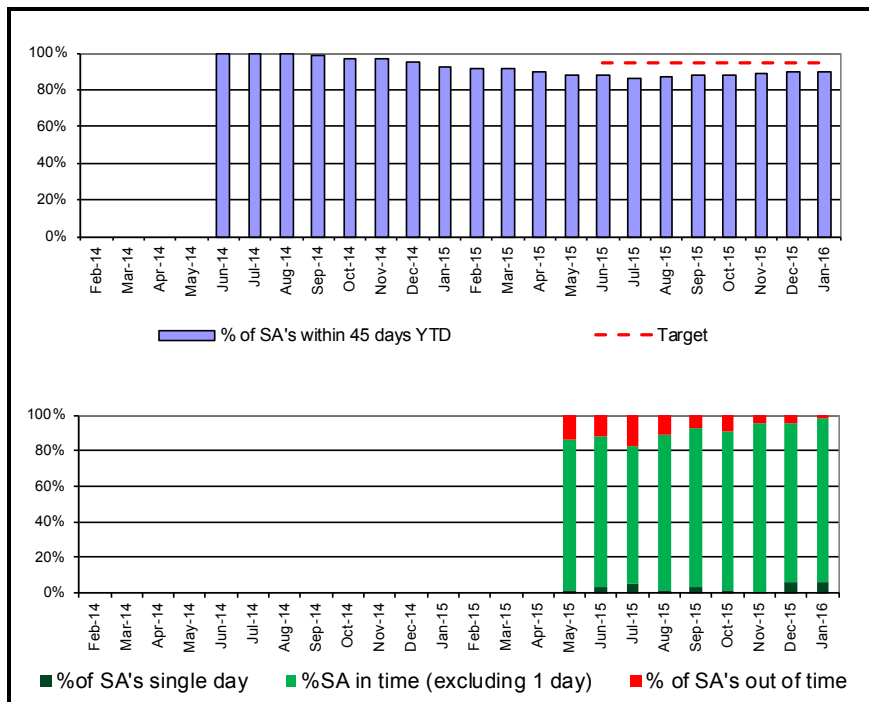
**Definition**  
 The rate is the number of new EHAs recorded in the previous 12 months divided by the population of 0-17 year olds in Peterborough multiplied by 10,000. The number of EHAs is taken from the local EHA tracker database and is not externally valid.  
 Population for denominator: 46600

**G = TBC**      **A = TBC**      **R = TBC**

Year	PCC Result	ER Result	ENG Result
2012/13	-	-	-
2013/14	-	-	-
2014/15	234.6	131.9	-

Chart 5

**Single Assessment Timescales (within 45 working days) Jan 2016**



Month	SA 45	SA >45	SA 1 day	SA All	% Mnth	% YTD	Target	RAG
Feb-14								
Mar-14								
Apr-14	0	0	0	0	0.0%	0.0%		
May-14	0	0	0	0	0.0%	0.0%		
Jun-14	32	0	20	32	100.0%	100.0%		
Jul-14	160	0	24	160	100.0%	100.0%		
Aug-14	205	1	21	206	99.5%	99.7%		
Sep-14	224	8	32	232	96.6%	98.6%		
Oct-14	238	15	22	253	94.1%	97.3%		
Nov-14	190	10	36	200	95.0%	96.9%		
Dec-14	240	38	31	278	86.3%	94.7%		
Jan-15	275	42	56	317	86.8%	92.7%		
Feb-15	216	32	20	248	87.1%	91.8%		
Mar-15	238	29	31	267	89.1%	91.5%		
Apr-15	259	29	3	288	89.9%	89.9%	95.0%	R
May-15	283	44	4	327	86.5%	88.1%	95.0%	R
Jun-15	296	41	10	337	87.8%	88.0%	95.0%	R
Jul-15	321	67	21	388	82.7%	86.5%	95.0%	R
Aug-15	270	34	6	304	88.8%	86.9%	95.0%	R
Sep-15	242	19	8	261	92.7%	87.7%	95.0%	R
Oct-15	243	24	5	267	91.0%	88.1%	95.0%	R
Nov-15	227	10	2	237	95.8%	88.9%	95.0%	R
Dec-15	210	10	14	220	95.5%	89.4%	95.0%	R
Jan-16	225	4	14	229	98.3%	90.1%	95.0%	A

YTD:	2576	282	87	2858	--	90.1%	95.0%	A
------	------	-----	----	------	----	-------	-------	---

**Definition**  
 The number of single assessments YTD completed within 45 working days from the start of the referral start, as a percentage of the number of single assessments completed YTD.

G =95%	A>90%	R<90%
--------	-------	-------

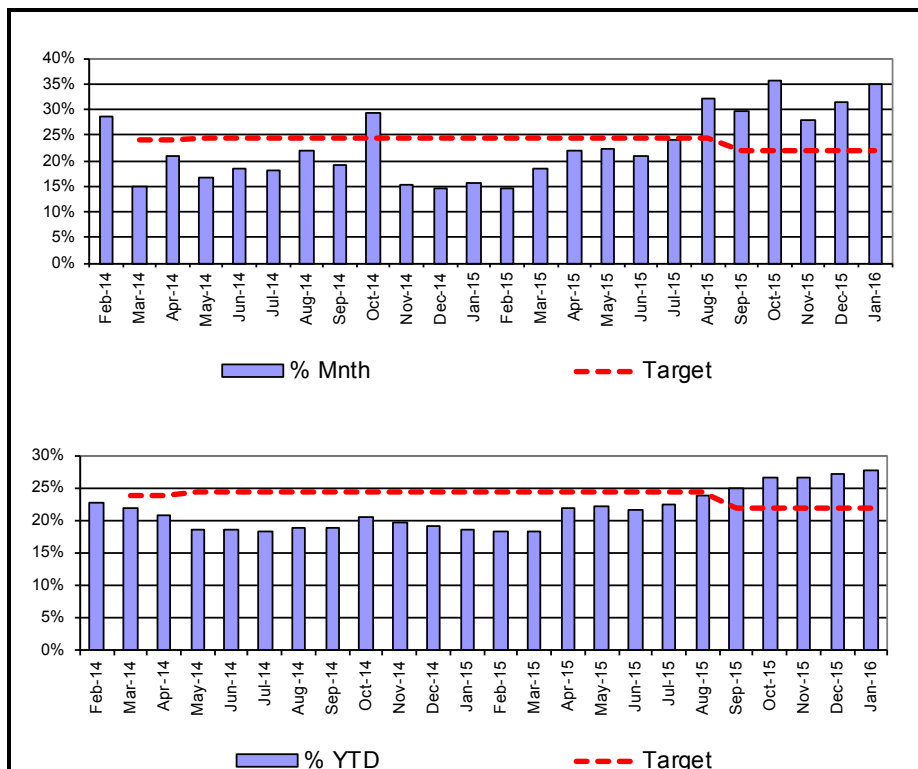
Year	PCC Rd	SN Result	ER Result	ENG Result
2012-13				
2013-14				
2014-15	90.0%	79.0%	88.0%	

**CSC Commentary**  
 Significant improvement has continued in terms of assessments being completed within 45 days and whilst the year to date figure is still slightly short of the 95% target, it is on a clear upward trajectory and now sits at 90.1%  
 The in-month performance in January has maintained the improvement made last month and is exceeding the target with 98.3% of single assessments completed within 45 days. The RAG rating is now amber as the year to date performance is still below 95% target. It is hoped that with continued good performance that this will be met by the end of the year.

Chart 6

Re-referrals within 12 months

Jan 2016



Month	Re-Refs	Refs	% Mnth	% YTD	Target	Var	RAG
Feb-14	62	217	28.6%	22.6%	23.9%	-1.3	G
Mar-14	37	249	14.9%	21.9%	23.9%	-2.0	G
Apr-14	46	221	20.8%	20.8%	23.9%	-3.1	G
May-14	43	260	16.5%	18.5%	24.3%	-5.8	G
Jun-14	39	210	18.6%	18.5%	24.3%	-5.8	G
Jul-14	35	194	18.0%	18.4%	24.3%	-5.9	G
Aug-14	31	140	22.1%	18.9%	24.3%	-5.4	G
Sep-14	49	254	19.3%	19.0%	24.3%	-5.3	G
Oct-14	59	201	29.4%	20.4%	24.3%	-3.9	G
Nov-14	36	237	15.2%	19.7%	24.3%	-4.6	G
Dec-14	35	237	14.8%	19.1%	24.3%	-5.2	G
Jan-15	33	213	15.5%	18.7%	24.3%	-5.6	G
Feb-15	39	269	14.5%	18.3%	24.3%	-6.0	G
Mar-15	56	303	18.5%	18.3%	24.3%	-6.0	G
Apr-15	70	319	21.9%	21.9%	24.3%	-2.4	G
May-15	94	418	22.5%	22.3%	24.3%	-2.0	G
Jun-15	106	505	21.0%	21.7%	24.3%	-2.6	G
Jul-15	129	538	24.0%	22.4%	24.3%	-1.9	A
Aug-15	101	314	32.2%	23.9%	24.3%	-0.4	A
Sep-15	127	426	29.8%	24.9%	22.0%	2.9	R
Oct-15	160	448	35.7%	26.5%	22.0%	4.5	R
Nov-15	150	539	27.8%	26.7%	22.0%	4.7	R
Dec-15	123	393	31.3%	27.2%	22.0%	5.2	R
Jan-16	97	278	34.9%	27.7%	22.0%	5.7	R

116

**CSC Commentary**  
 There has been a further increase in the re-referral rate this month. This has been on an upward trajectory. A dip sample audit completed by the Quality Assurance Team to assist our understanding of the issue, has taken place. This audit highlighted that more work needs to be completed at the contact stage to avoid unnecessary progression into a referral. It identified that the quality of some assessments needs to be improved. the audit also indicated that there may be a need to look at capacity and responsiveness within Early Help. This will be explored further in February.

YTD:	1,157	4,178	--	27.7%	22.0%	5.7	R
------	-------	-------	----	-------	-------	-----	---

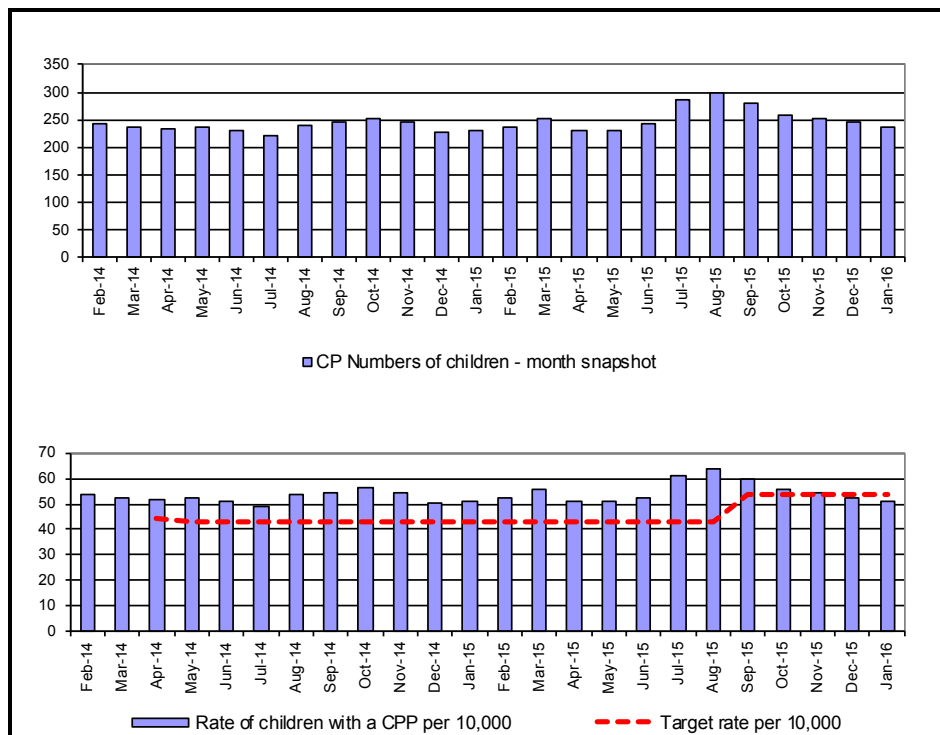
**Definition**  
 The percentage of referrals where a previous referral has occurred within the last 12 months. If a child has more than one re-referral in the year, each one will be counted.



Year	PCC Result	SN Result	ENG Result
2012-13	33.5%	24.3%	24.9%
2013-14	21.8%	24.9%	23.4%
2014-15	18.3%	25.8%	24.0%

Chart 7

**Number of Children with a Child Protection Plan per 10,000** Jan 2016



Month	CP	Pop.	Rate	Target	Variance	RAG
Feb-14	242	45000	53.8	44.2	21.7%	G
Mar-14	237	45000	52.7	44.2	19.2%	R
Apr-14	234	45000	52.0	44.2	17.6%	R
May-14	237	45000	52.7	43.1	22.2%	R
Jun-14	231	45000	51.3	43.1	19.1%	R
Jul-14	221	45000	49.1	43.1	13.9%	R
Aug-14	241	45000	53.6	43.1	24.3%	A
Sep-14	246	45000	54.7	43.1	26.8%	R
Oct-14	253	45000	56.2	43.1	30.4%	R
Nov-14	246	45000	54.7	43.1	26.8%	R
Dec-14	228	45000	50.7	43.1	17.6%	R
Jan-15	231	45000	51.3	43.1	19.1%	R
Feb-15	236	45000	52.4	43.1	21.7%	R
Mar-15	252	45000	56.0	43.1	29.9%	R
Apr-15	229	45000	50.9	43.1	18.1%	R
May-15	231	45000	51.3	43.1	19.1%	R
Jun-15	244	46600	52.4	43.1	21.5%	R
Jul-15	286	46600	61.4	43.1	42.4%	R
Aug-15	298	46600	63.9	43.1	48.4%	R
Sep-15	279	46600	59.9	53.6	11.7%	R
Oct-15	259	46600	55.6	53.6	3.7%	R
Nov-15	252	46600	54.1	53.6	0.9%	A
Dec-15	245	46600	52.6	53.6	-1.9%	G
Jan-16	237	46600	50.9	53.6	-5.1%	G

**CSC Commentary**

The continuing reduction of children subject to a Child Protection plan is showing good performance, reflecting an improving position in regards to our statical neighbour authorities average. The oversight of managers to test the threshold of whether a CP plan is required as opposed to moving to either a Child In Need plan, that supports challenge and management of risk.

**Definition**

Number of children with a current child protection plan divided by the population of 0-17 year olds in Peterborough multiplied by 10,000. The number of children is taken as a snapshot count at the end of each month

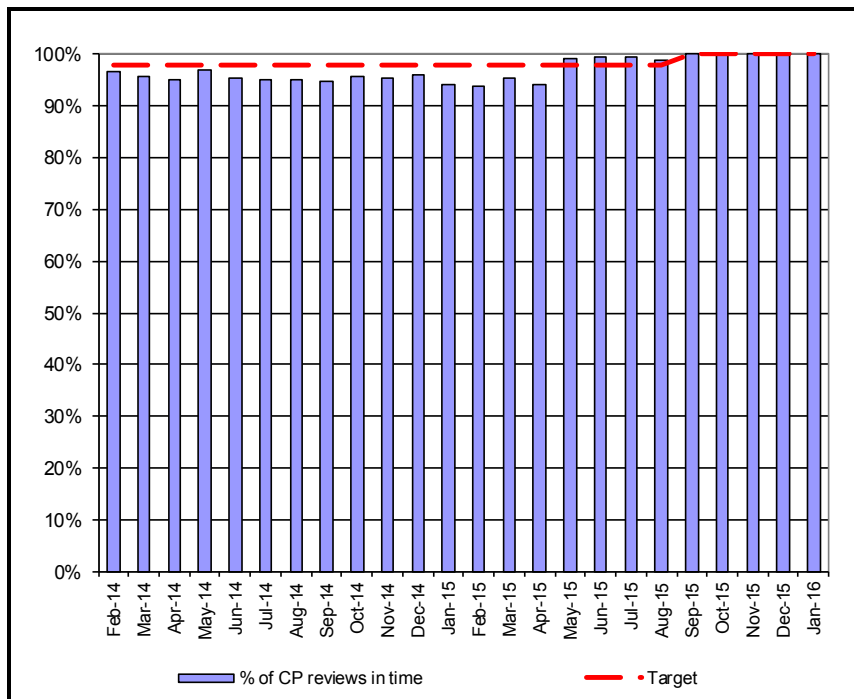
Population for denominator: 46600

**G = 53.6      A < 55      R > 55**

Year	PCC Result	SN Result	ENG Result
2012-13	60.3	43.1	37.9
2013-14	52.4	54.0	42.1
2014-15	49.6	55.5	42.9

Chart 8

**Child Protection Reviews within timescales** Jan 2016



Month	Num.	Denom	% of CP	Target	Variance	RAG
Feb-14	139	144	96.5%	98.0%	-1.5	A
Mar-14	112	117	95.7%	98.0%	-2.3	A
Apr-14	99	104	95.2%	98.0%	-2.8	A
May-14	161	166	97.0%	98.0%	-1.0	A
Jun-14	162	170	95.3%	98.0%	-2.7	A
Jul-14	151	159	95.0%	98.0%	-3.0	A
Aug-14	156	164	95.1%	98.0%	-2.9	A
Sep-14	148	156	94.9%	98.0%	-3.1	A
Oct-14	149	156	95.5%	98.0%	-2.5	A
Nov-14	161	169	95.3%	98.0%	-2.7	A
Dec-14	163	170	95.9%	98.0%	-2.1	A
Jan-15	161	171	94.2%	98.0%	-3.8	A
Feb-15	165	176	93.8%	98.0%	-4.3	A
Mar-15	146	153	95.4%	98.0%	-2.6	A
Apr-15	131	139	94.2%	98.0%	-3.8	A
May-15	123	124	99.2%	98.0%	1.2	G
Jun-15	139	140	99.3%	98.0%	1.3	G
Jul-15	164	165	99.4%	98.0%	1.4	G
Aug-15	165	167	98.8%	98.0%	0.8	G
Sep-15	177	177	100.0%	100.0%	0.0	G
Oct-15	211	211	100.0%	100.0%	0.0	G
Nov-15	207	207	100.0%	100.0%	0.0	G
Dec-15	198	198	100.0%	100.0%	0.0	G
Jan-16	175	175	100.0%	100.0%	0.0	G

**CSC Commentary**

There continues to be strong performance in this area consistent over several months

**Definition**

The percentage of children with a Child Protection Plan for at least the previous three months, reviewed within the required timescales.

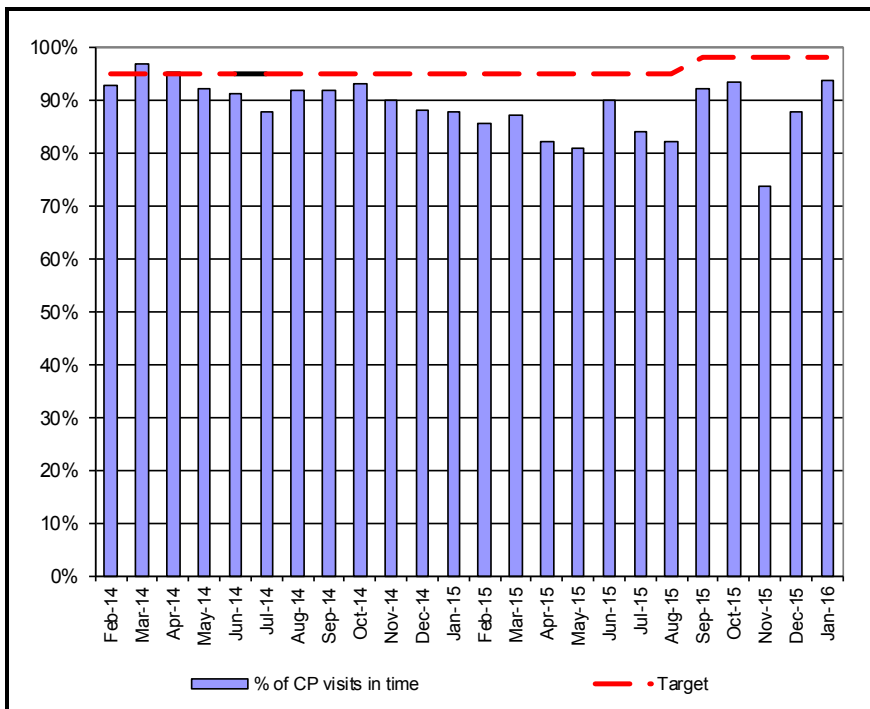
<b>G = 100%</b>	<b>A &gt;98% &lt;100%</b>	<b>R &lt;98%</b>
-----------------	---------------------------	------------------

Year	PCC Result	SN Result	ENG Result
2012-13	98.3%	97.8%	96.2%
2013-14	95.8%	96.0%	94.6%
2014-15	93.4%	91.7%	94.0%



Chart 9

**Child protection statutory visits in time** Jan 2016



Month	Num.	Denom.	% of CP	Target	Variance	RAG
Feb-14	191	206	92.7%	95.0%	-2.3	A
Mar-14	209	216	96.8%	95.0%	1.8	A
Apr-14	199	209	95.2%	95.0%	0.2	G
May-14	200	217	92.2%	95.0%	-2.8	G
Jun-14	198	217	91.2%	95.0%	-3.8	A
Jul-14	181	206	87.9%	95.0%	-7.1	A
Aug-14	193	210	91.9%	95.0%	-3.1	A
Sep-14	202	220	91.8%	95.0%	-3.2	A
Oct-14	203	218	93.1%	95.0%	-1.9	A
Nov-14	210	233	90.1%	95.0%	-4.9	A
Dec-14	199	226	88.1%	95.0%	-6.9	A
Jan-15	178	203	87.7%	95.0%	-7.3	A
Feb-15	171	200	85.5%	95.0%	-9.5	A
Mar-15	178	204	87.3%	95.0%	-7.7	A
Apr-15	165	201	82.1%	95.0%	-12.9	A
May-15	169	209	80.9%	95.0%	-14.1	R
Jun-15	191	212	90.1%	95.0%	-4.9	R
Jul-15	195	232	84.1%	95.0%	-10.9	A
Aug-15	225	274	82.1%	95.0%	-12.9	R
Sep-15	249	270	92.2%	98.0%	-5.8	R
Oct-15	231	247	93.5%	98.0%	-4.5	R
Nov-15	174	236	73.7%	98.0%	-24.3	R
Dec-15	206	235	87.7%	98.0%	-10.3	R
Jan-16	195	208	93.8%	98.0%	-4.3	R

**CSC Commentary**

The steady increase in the level of visiting over recent months has begun to improve again as recording of visits in a more timely way is making a difference. There is an expectation that this figure will continue to rise as numbers of children subject to a CP Plan reduces and caseloads for social workers also reduces and recording of visits in a timely manner improves which has been evident this month.

**Definition**

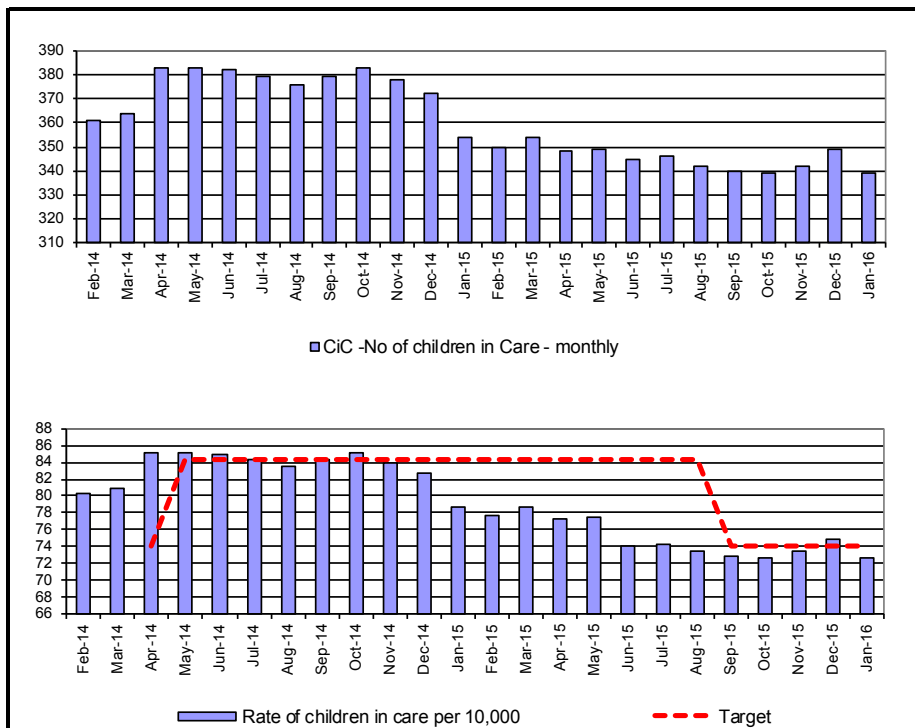
Of all children subject to a child protection plan for more than 4 weeks, the number and percentage of visits that were done within the 4 week deadline.

This is snapshot data taken at the month end.

**G = 98%**      **A > 96-98%**      **R < 96%**

Chart 10

**Number of Children in Care per 10,000** **Jan 2016**



Month	CiC -	Pop.	Rate	Target	Variance	RAG
Feb-14	361	45000	80.2	74.0	8.4%	R
Mar-14	364	45000	80.9	74.0	9.3%	R
Apr-14	383	45000	85.1	74.0	15.0%	R
May-14	383	45000	85.1	84.4	0.8%	G
Jun-14	382	45000	84.9	84.4	0.6%	G
Jul-14	379	45000	84.2	84.4	-0.2%	G
Aug-14	376	45000	83.6	84.4	-1.0%	G
Sep-14	379	45000	84.2	84.4	-0.2%	G
Oct-14	383	45000	85.1	84.4	0.8%	G
Nov-14	378	45000	84.0	84.4	-0.5%	G
Dec-14	372	45000	82.7	84.4	-2.1%	G
Jan-15	354	45000	78.7	84.4	-6.8%	G
Feb-15	350	45000	77.8	84.4	-7.8%	G
Mar-15	354	45000	78.7	84.4	-6.8%	G
Apr-15	348	45000	77.3	84.4	-8.4%	G
May-15	349	45000	77.6	84.4	-8.1%	G
Jun-15	345	46600	74.0	84.4	-12.3%	G
Jul-15	346	46600	74.2	84.4	-12.0%	G
Aug-15	342	46600	73.4	84.4	-13.0%	G
Sep-15	340	46600	73.0	74.0	-1.4%	G
Oct-15	339	46600	72.7	74.0	-1.7%	G
Nov-15	342	46600	73.4	74.0	-0.8%	G
Dec-15	349	46600	74.9	74.0	1.2%	A
Jan-16	339	46600	72.7	74.0	-1.7%	G

**CSC Commentary**  
 The number of CiC at the end of January has decreased by 10 from the previous month to 339. It is now rag rated green again.

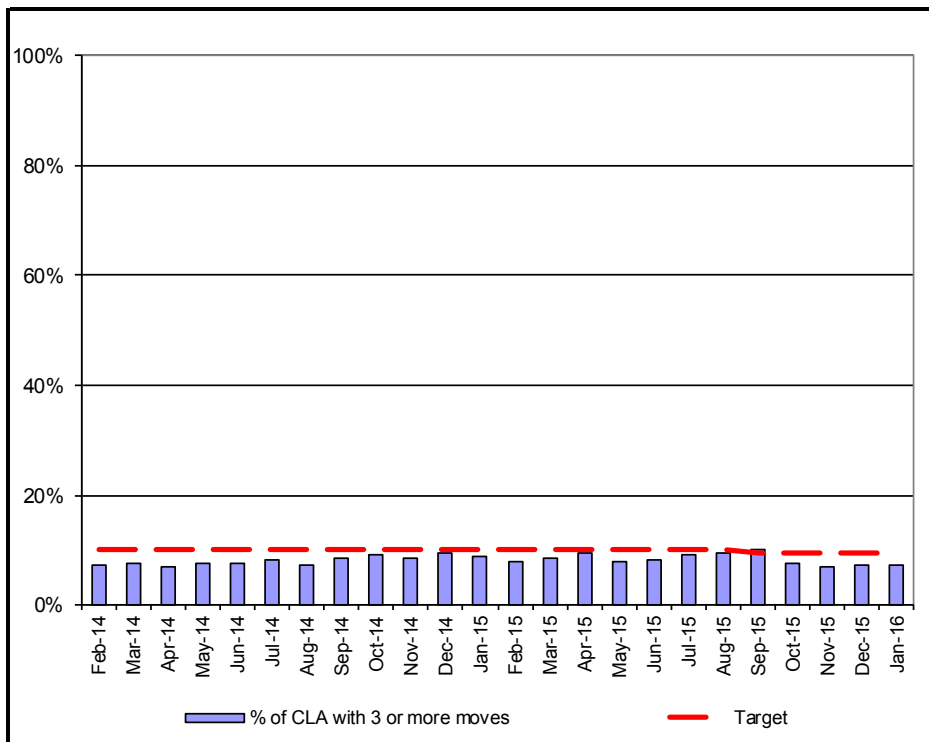
**Definition**  
 Number of children in care divided by the population of 0-17 year olds in Peterborough multiplied by 10,000  
 The number of children in care is taken as a snapshot count at the end of each month  
 Population for denominator: 46600

**G = 74.0**    **A>74.0**    **R>79.4**

Year	PCC Result	SN Result	ENG Result
2012-13	78.0	78.0	60.0
2013-14	80.0	77.2	60.0
2014-15	74.0	79.4	60.0

Chart 11

**Placement Stability: 3 or more placements during previous 12 months for CiC** **Jan 2016**



Month	Num.	Denom.	% of CLA	Target	Variance	RAG
Feb-14	26	361	7.2%	10.1%	-2.9	G
Mar-14	28	364	7.7%	10.1%	-2.4	G
Apr-14	27	383	7.0%	10.1%	-3.1	G
May-14	29	383	7.6%	10.1%	-2.5	G
Jun-14	29	382	7.6%	10.1%	-2.5	G
Jul-14	31	379	8.2%	10.1%	-1.9	G
Aug-14	28	376	7.4%	10.1%	-2.7	G
Sep-14	32	379	8.4%	10.1%	-1.7	G
Oct-14	35	383	9.1%	10.1%	-1.0	G
Nov-14	32	378	8.5%	10.1%	-1.6	G
Dec-14	35	372	9.4%	10.1%	-0.7	G
Jan-15	32	354	9.0%	10.1%	-1.1	G
Feb-15	28	350	8.0%	10.1%	-2.1	G
Mar-15	30	354	8.5%	10.1%	-1.6	G
Apr-15	33	348	9.5%	10.1%	-0.6	G
May-15	28	349	8.0%	10.1%	-2.1	G
Jun-15	29	345	8.4%	10.1%	-1.7	G
Jul-15	32	346	9.2%	10.1%	-0.9	G
Aug-15	33	342	9.6%	10.1%	-0.5	G
Sep-15	35	340	10.3%	9.5%	0.8	A
Oct-15	26	339	7.7%	9.5%	-1.8	G
Nov-15	24	342	7.0%	9.5%	-2.5	G
Dec-15	25	349	7.2%	9.5%	-2.3	G
Jan-16	26	349	7.4%	9.5%	-2.1	G

121

**CSC Commentary**  
 A stretch target was put in place for this indicator as performance was excellent last year. After a slight increasing trend, performance from September last year is heading back in the right direction and is above the target.

**Definition**  
 The percentage of children in care at any given time with three or more placements during the last 12 months.

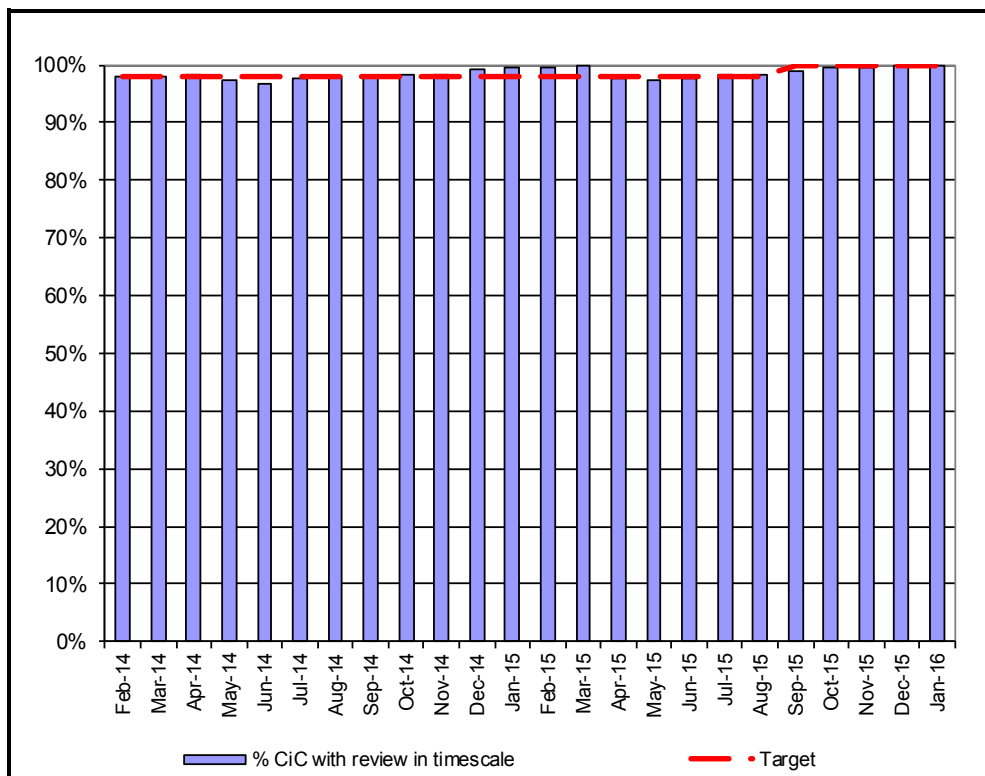
Population for denominator: 46600

**G = 9.5%**    **A > 9.5-11.3%**    **R > 11.3**

Year	PCC Result	SN Result	ENG Result
2012-13	11.1%	10.3%	11.1%
2013-14	9.0%	11.3%	11.0%
2014-15	8.5%		

Chart 12

**Children in Care Reviews held within timescales** **Jan 2016**



Month	Num.	Denom.	% CiC	Target	Variance	RAG
Feb-14	340	347	98.0%	98.0%	0.0	G
Mar-14	334	341	97.9%	98.0%	-0.1	G
Apr-14	358	364	98.4%	98.0%	0.4	A
May-14	367	377	97.3%	98.0%	-0.7	G
Jun-14	366	378	96.8%	98.0%	-1.2	A
Jul-14	360	369	97.6%	98.0%	-0.4	A
Aug-14	360	368	97.8%	98.0%	-0.2	A
Sep-14	364	371	98.1%	98.0%	0.1	A
Oct-14	360	366	98.4%	98.0%	0.4	G
Nov-14	363	369	98.4%	98.0%	0.4	G
Dec-14	386	389	99.2%	98.0%	1.2	G
Jan-15	345	347	99.4%	98.0%	1.4	G
Feb-15	337	339	99.4%	98.0%	1.4	G
Mar-15	342	343	99.7%	98.0%	1.7	G
Apr-15	330	338	97.6%	98.0%	-0.4	G
May-15	330	339	97.3%	98.0%	-0.7	G
Jun-15	322	330	97.6%	98.0%	-0.4	G
Jul-15	326	332	98.2%	98.0%	0.2	G
Aug-15	331	337	98.2%	98.0%	0.2	G
Sep-15	330	334	98.8%	100.0%	-1.2	A
Oct-15	326	327	99.7%	100.0%	-0.3	A
Nov-15	335	336	99.7%	100.0%	-0.3	A
Dec-15	344	345	99.7%	100.0%	-0.3	A
Jan-16	329	329	100.0%	100.0%	0.0	G

**CSC Commentary**

Reviews for Children in Care have all been held within timescale since April 2015, last calendar years percentage captures one child who's review was held out of timescale at the end of January 2015. However, this has now moved out of the 'capture period' and reviews are back to being at 100% and are green rag rated.

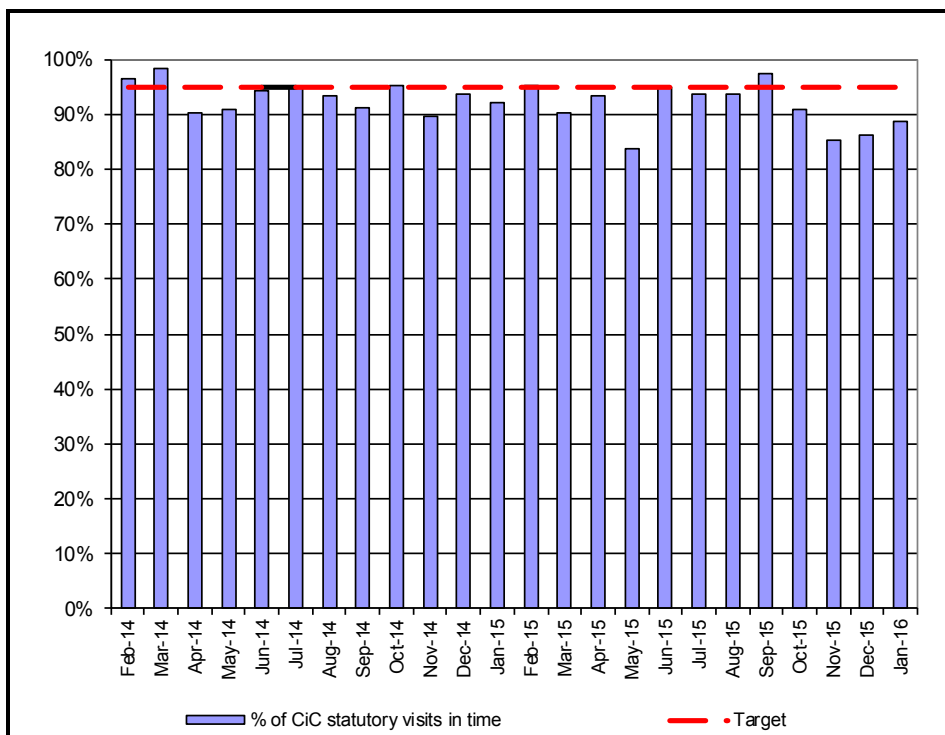
**Definition**

The percentage of Looked after children for at least one month, whose case was reviewed within the required timescales.  
 The denominator is children who are LAC for at least one month at the end of the reporting month. The numerator is the number of children who have not had a review in the last 12 months recorded as outside of timescale.

**G = 100%**      **A > 98%**      **R < 98%**

Chart 13

**Children in care statutory visits in time** **Jan 2016**



Month	Num.	Denom.	% of	Target	Variance	RAG
Feb-14	330	342	96.5%	95.0%	1.5	A
Mar-14	339	345	98.3%	95.0%	3.3	G
Apr-14	320	354	90.4%	95.0%	-4.6	G
May-14	342	376	91.0%	95.0%	-4.0	A
Jun-14	344	365	94.2%	95.0%	-0.8	A
Jul-14	341	359	95.0%	95.0%	0.0	A
Aug-14	333	357	93.3%	95.0%	-1.7	G
Sep-14	325	356	91.3%	95.0%	-3.7	A
Oct-14	346	363	95.3%	95.0%	0.3	A
Nov-14	323	360	89.7%	95.0%	-5.3	G
Dec-14	337	360	93.6%	95.0%	-1.4	G
Jan-15	319	346	92.2%	95.0%	-2.8	A
Feb-15	317	333	95.2%	95.0%	0.2	G
Mar-15	302	334	90.4%	95.0%	-4.6	G
Apr-15	307	329	93.3%	95.0%	-1.7	G
May-15	278	332	83.7%	95.0%	-11.3	A
Jun-15	308	324	95.1%	95.0%	0.1	G
Jul-15	300	320	93.8%	95.0%	-1.3	G
Aug-15	311	332	93.7%	95.0%	-1.3	G
Sep-15	320	328	97.6%	95.0%	2.6	G
Oct-15	295	325	90.8%	95.0%	-4.2	A
Nov-15	285	334	85.3%	95.0%	-9.7	R
Dec-15	286	332	86.1%	95.0%	-8.9	R
Jan-16	287	324	88.6%	95.0%	-6.4	R

**CSC Commentary**

While this rag rating remains as red, the number of statutory visits for January 2016 has continued the recent upward trend and has increased to 88.6%. Work continues within the teams as this remains as an area for improvement and completing and recording visits is being addressed by Team Managers.

**Definition**

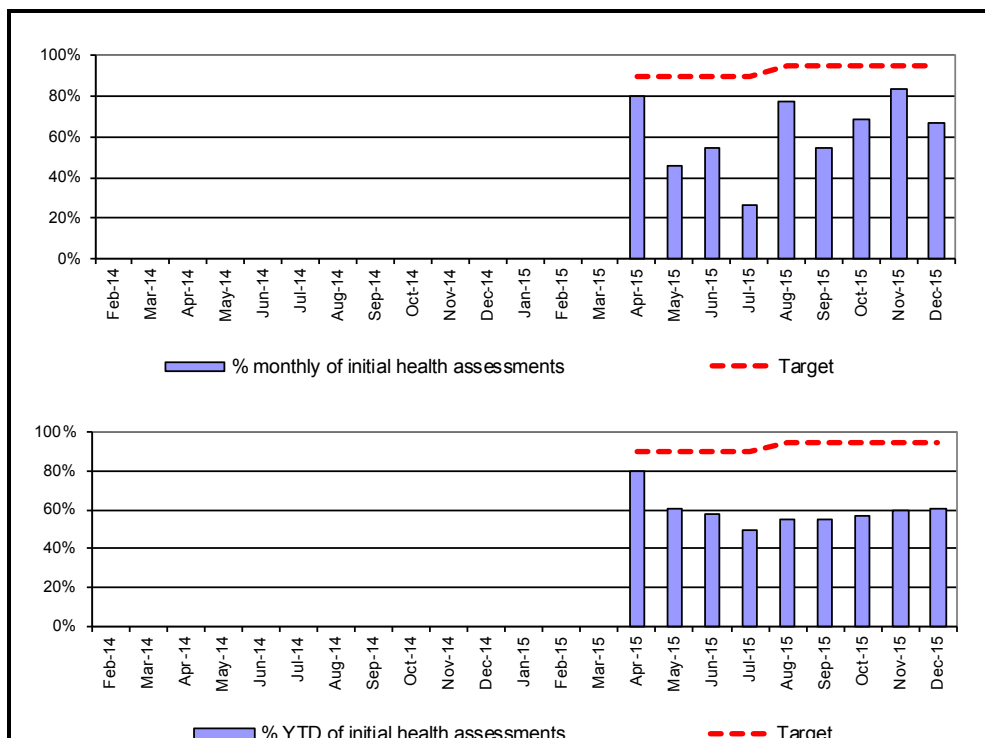
Of all Children in Care that have been looked after for more than 6 weeks, the number and percentage of visits that were completed within the 6 week deadline (or within three months for those Children in Care that have been looked after for more than 12 months and whose placement is deemed to be permanent). This is snapshot data taken at the month end.

**G = 95%**      **A > 90%**      **R < 90%**

Chart 14

Initial health assessments completed within 20 working days of child entering care

Jan 2016



Month	Init.HA	CiC St	% monthly	% YTD	Target	Var	RAG
Feb-14							
Mar-14							
Apr-14							
May-14							
Jun-14							
Jul-14							
Aug-14							
Sep-14							
Oct-14							
Nov-14							
Dec-14							
Jan-15							
Feb-15							
Mar-15							
Apr-15	8	10	80.0%	80.0%	90.0%	-10.0	R
May-15	6	13	46.2%	60.9%	90.0%	-29.1	R
Jun-15	12	22	54.5%	57.8%	90.0%	-32.2	R
Jul-15	4	15	26.7%	50.0%	90.0%	-40.0	R
Aug-15	10	13	76.9%	54.8%	95.0%	-40.2	R
Sep-15	6	11	54.5%	54.8%	95.0%	-40.2	R
Oct-15	11	16	68.8%	57.0%	95.0%	-38.0	R
Nov-15	10	12	83.3%	59.8%	95.0%	-35.2	R
Dec-15	6	9	66.7%	60.3%	95.0%	-34.7	R

<b>YTD:</b>	<b>73</b>	<b>121</b>	<b>--</b>	<b>60.3%</b>	<b>95.0%</b>	<b>-34.7</b>	<b>R</b>
-------------	-----------	------------	-----------	--------------	--------------	--------------	----------

**CSC Commentary**  
 The current performance system struggles to capture this indicator accurately. Unconfirmed data suggests that around 88% of the assessments were completed in timescale in December 2015, and it is confirmed that 100% of assessments were completed in timescale in November; this is a much improved picture compared with last year, but remains an area where scrutiny is required

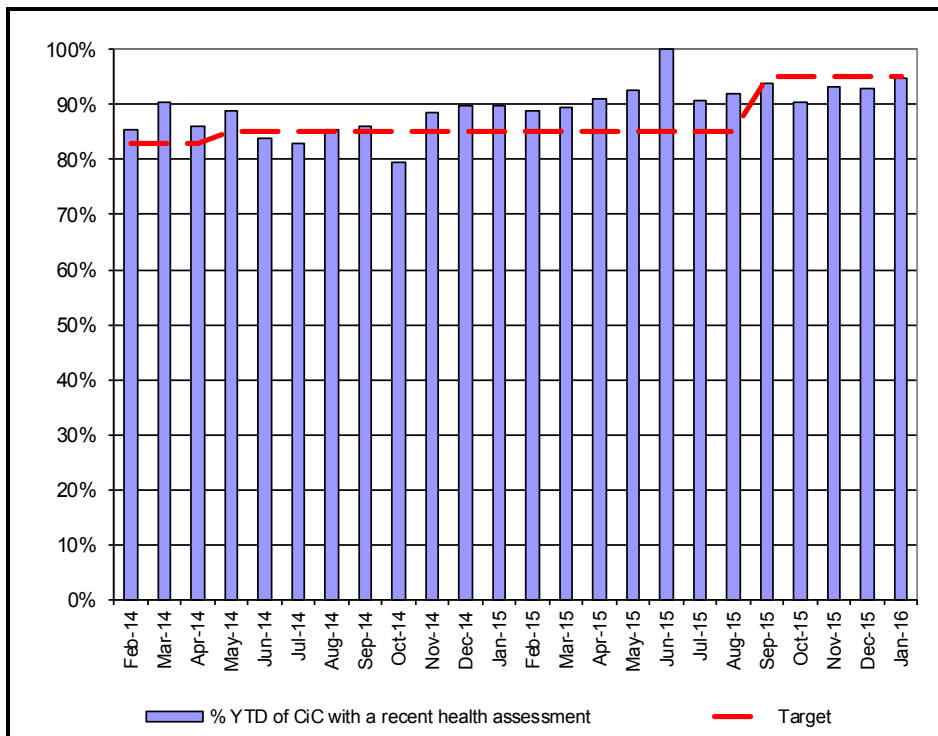
**Definition**  
 The number of children becoming looked after that have an initial health assessment recorded within 20 working days of the child entering care. The number of children is measured one month in arrears to enable time for the 20 day period to elapse and excludes cases where the episode of care was closed within 20 days and also children entering care because they have been placed on remand (because the remand institution is responsible for completing the initial health assessment).

<b>G &gt;= 95%</b>	<b>A &gt; 85 -95%</b>	<b>R &lt; 85%</b>
--------------------	-----------------------	-------------------

124

Chart 15

**Health of Children in Care - Annual Health Assessments** **Jan 2016**



Month	Num.	Denom.	% YTD	Target	Variance	RAG
Feb-14	204	239	85.4%	83.0%	2.4	G
Mar-14	225	249	90.4%	83.0%	7.4	G
Apr-14	224	260	86.2%	83.0%	3.2	G
May-14	236	266	88.7%	85.0%	3.7	G
Jun-14	221	264	83.7%	85.0%	-1.3	G
Jul-14	218	263	82.9%	85.0%	-2.1	A
Aug-14	226	265	85.3%	85.0%	0.3	A
Sep-14	230	267	86.1%	85.0%	1.1	G
Oct-14	205	258	79.5%	85.0%	-5.5	G
Nov-14	232	262	88.5%	85.0%	3.5	A
Dec-14	239	266	89.8%	85.0%	4.8	G
Jan-15	227	253	89.7%	85.0%	4.7	G
Feb-15	224	252	88.9%	85.0%	3.9	G
Mar-15	229	256	89.5%	85.0%	4.5	G
Apr-15	232	255	91.0%	85.0%	6.0	G
May-15	237	256	92.6%	85.0%	7.6	G
Jun-15	253	253	100.0%	85.0%	15.0	G
Jul-15	219	241	90.9%	85.0%	5.9	G
Aug-15	221	240	92.1%	85.0%	7.1	G
Sep-15	224	239	93.7%	95.0%	-1.3	A
Oct-15	210	232	90.5%	95.0%	-4.5	A
Nov-15	216	232	93.1%	95.0%	-1.9	A
Dec-15	212	228	93.0%	95.0%	-2.0	A
Jan-16	211	223	94.6%	95.0%	-0.4	A

**CSC Commentary**  
 Performance has increased to 94.6% and is now only less than half a percentage point below our target of 95%.

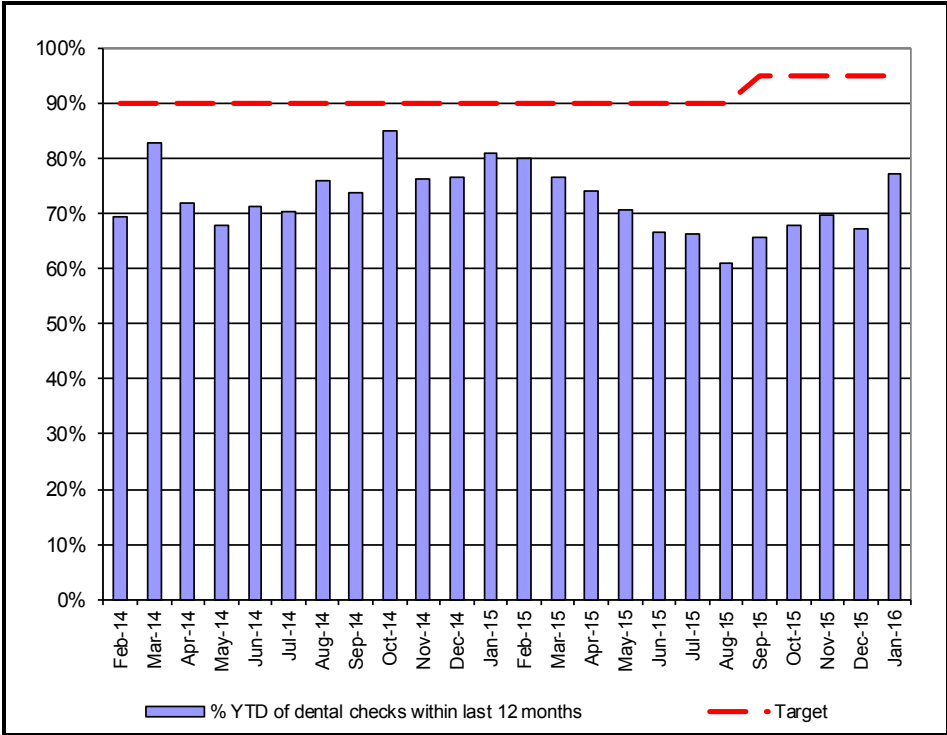
**Definition**  
 Of the children who had been in care for at least 12 months the proportion who had an annual health assessment during the previous 12 months.

<b>G &gt;= 95%</b>	<b>A &gt; 85%</b>	<b>R &lt; 85%</b>
--------------------	-------------------	-------------------

Year	PCC Result	SN Result	ENG Result
2012-13	85.4%	85.0%	87.3%
2013-14	93.9%	89.1%	88.4%
2014 -15			

Chart 16

**Children in care (aged 3-17 years) with dental checks held within previous 12 months** **Jan 2016**



Month	Num.	Denom.	% YTD	Target	Variance	RAG
Feb-14	210	302	69.5%	90.0%	-20.5	R
Mar-14	249	301	82.7%	90.0%	-7.3	R
Apr-14	230	320	71.9%	90.0%	-18.1	A
May-14	218	321	67.9%	90.0%	-22.1	R
Jun-14	230	322	71.4%	90.0%	-18.6	R
Jul-14	225	320	70.3%	90.0%	-19.7	R
Aug-14	239	315	75.9%	90.0%	-14.1	R
Sep-14	232	315	73.7%	90.0%	-16.3	R
Oct-14	265	312	84.9%	90.0%	-5.1	R
Nov-14	236	310	76.1%	90.0%	-13.9	A
Dec-14	237	309	76.7%	90.0%	-13.3	R
Jan-15	240	296	81.1%	90.0%	-8.9	R
Feb-15	231	289	79.9%	90.0%	-10.1	A
Mar-15	225	294	76.5%	90.0%	-13.5	R
Apr-15	213	287	74.2%	90.0%	-15.8	R
May-15	206	291	70.8%	90.0%	-19.2	R
Jun-15	195	293	66.6%	90.0%	-23.4	R
Jul-15	194	292	66.4%	90.0%	-23.6	R
Aug-15	176	289	60.9%	90.0%	-29.1	R
Sep-15	191	291	65.6%	95.0%	-29.4	R
Oct-15	196	289	67.8%	95.0%	-27.2	R
Nov-15	204	293	69.6%	95.0%	-25.4	R
Dec-15	198	295	67.1%	95.0%	-27.9	R
Jan-16	222	288	77.1%	95.0%	-17.9	R

126

**CSC Commentary**  
 While this indicator has risen by 10% this month, this remains an an area of significant focus as performance has historically been poor and it is still rag rated red. However, the number of dental checks for CIC (aged 3- 7 years) held within previous 12 months is now 77.1%.

**Definition**  
 The percentatge of children looked after who have had a dental check within the previous 12 months.  
 Children looked after aged between 3 and 17 years old that have a dental check recorded on Liquidlogic that was completed within the previous 12 months. The denominator is the number of children

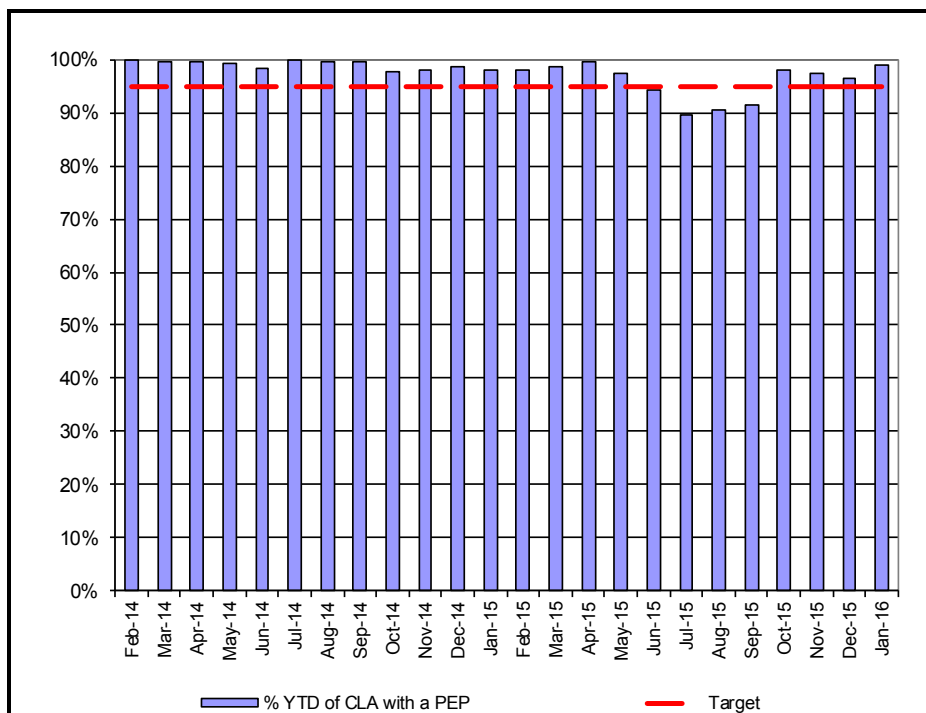
G >= 95%	A > 90%	R < 90%
----------	---------	---------



Chart 17

Personal Education Plans (PEPs)

Jan 2016



Month	Num.	Denom.	% YTD	Target	Variance	RAG
Feb-14	209	209	100.0%	95.0%	5.0	G
Mar-14	227	228	99.6%	95.0%	4.6	G
Apr-14	238	239	99.6%	95.0%	4.6	G
May-14	238	240	99.2%	95.0%	4.2	G
Jun-14	239	243	98.4%	95.0%	3.4	G
Jul-14	240	240	100.0%	95.0%	5.0	G
Aug-14	237	238	99.6%	95.0%	4.6	G
Sep-14	203	204	99.5%	95.0%	4.5	G
Oct-14	207	212	97.6%	95.0%	2.6	G
Nov-14	209	213	98.1%	95.0%	3.1	G
Dec-14	211	214	98.6%	95.0%	3.6	G
Jan-15	209	213	98.1%	95.0%	3.1	G
Feb-15	209	213	98.1%	95.0%	3.1	G
Mar-15	213	216	98.6%	95.0%	3.6	G
Apr-15	213	214	99.5%	95.0%	4.5	G
May-15	214	220	97.3%	95.0%	2.3	G
Jun-15	212	225	94.2%	95.0%	-0.8	A
Jul-15	206	230	89.6%	95.0%	-5.4	R
Aug-15	193	213	90.6%	95.0%	-4.4	A
Sep-15	195	213	91.5%	95.0%	-3.5	A
Oct-15	206	210	98.1%	95.0%	3.1	G
Nov-15	215	221	97.3%	95.0%	2.3	G
Dec-15	214	222	96.4%	95.0%	1.4	G
Jan-16	216	218	99.1%	95.0%	4.1	G

CSC Commentary

Six NIC were identified as not having had a PEP meeting in January. Of these six, one has now taken place, four have been arranged and are within the twenty day time scale. Discussions around education for the remaining one have taken place with the SEND team and the social worker and will be recorded as an initial PEP. Social workers are now required to complete PEPS using the ePEP system and record on Liquid Logic. Some PEP review meetings have taken place but not recorded on LL. The monthly PEP list provided by the Performance Management team is checked by PVS and forwarded to CSC team managers for follow up with social workers.

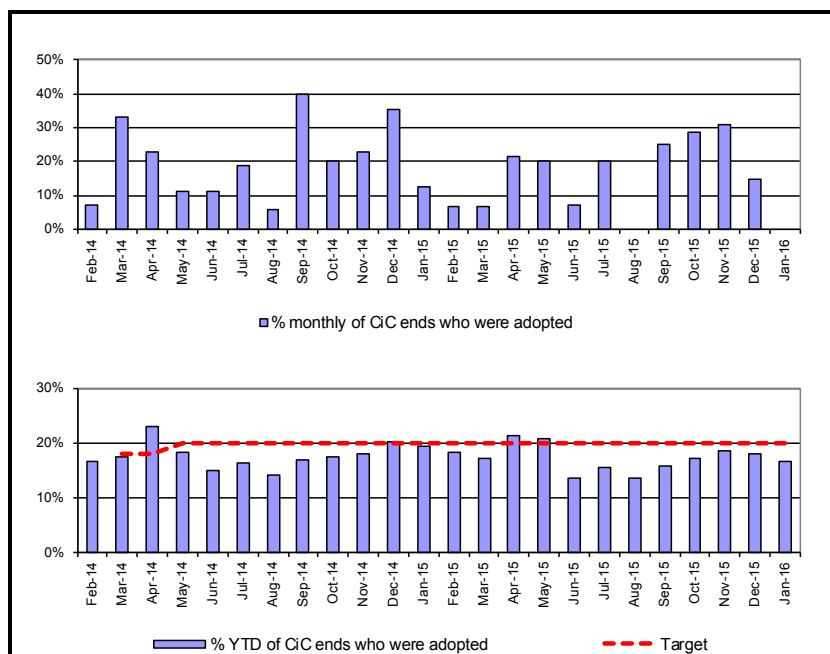
Definition

The denominator is the number of children in care who are of school age. The numerator is of those children, the number that have a PEP added to the system.

**G = 95%**      **A=95%-90%**      **R < 90%**

Chart 18

Percentage of children adopted Jan 2016



Month	Adop.	CiC Ends	% monthly	% YTD	Target	Var	RAG
Feb-14	1	14	7.1%	16.6%	18.0%	-1.4	G
Mar-14	3	9	33.3%	17.5%	18.0%	-0.5	A
Apr-14	3	13	23.1%	23.1%	18.0%	5.1	G
May-14	1	9	11.1%	18.2%	20.0%	-1.8	G
Jun-14	2	18	11.1%	15.0%	20.0%	-5.0	G
Jul-14	4	21	19.0%	16.4%	20.0%	-3.6	A
Aug-14	1	17	5.9%	14.1%	20.0%	-5.9	A
Sep-14	4	10	40.0%	17.0%	20.0%	-3.0	A
Oct-14	3	15	20.0%	17.5%	20.0%	-2.5	A
Nov-14	3	13	23.1%	18.1%	20.0%	-1.9	A
Dec-14	6	17	35.3%	20.3%	20.0%	0.3	A
Jan-15	2	16	12.5%	19.5%	20.0%	-0.5	A
Feb-15	1	15	6.7%	18.3%	20.0%	-1.7	A
Mar-15	1	15	6.7%	17.3%	20.0%	-2.7	A
Apr-15	3	14	21.4%	21.4%	20.0%	1.4	G
May-15	2	10	20.0%	20.8%	20.0%	0.8	G
Jun-15	2	28	7.1%	13.5%	20.0%	-6.5	A
Jul-15	5	25	20.0%	15.6%	20.0%	-4.4	A
Aug-15	0	11	0.0%	13.6%	20.0%	-6.4	A
Sep-15	5	20	25.0%	15.7%	20.0%	-4.3	A
Oct-15	4	14	28.6%	17.2%	20.0%	-2.8	A
Nov-15	4	13	30.8%	18.5%	20.0%	-1.5	A
Dec-15	3	20	15.0%	18.1%	20.0%	-1.9	A
Jan-16	0	12	0.0%	16.8%	20.0%	-3.2	A

<b>YTD:</b>	<b>28</b>	<b>167</b>	<b>--</b>	<b>16.8%</b>	<b>20.0%</b>	<b>-3.2</b>	<b>A</b>
-------------	-----------	------------	-----------	--------------	--------------	-------------	----------

**Definition**  
The number of children adopted as a percentage of the number of children who ceased to be in care



Year	PCC Result	SN Result	ENG Result
2012-13	13.0%	19.0%	14.0%
2013-14	18.0%	22.4%	17.0%
2014-15	19.0%	24.0%	17.0%

**CSC Commentary**  
Quarterly data shows that the number of new decisions nationally has continued to fall from 1,830 in quarter 2, 2013 - 14 to 1,100 in quarter 4, 2014 - 15, representing a decrease in 40%. In Peterborough the decrease has not been experienced previously however it appears that Peterborough has fallen in line with other areas, in this period as there were 8 decisions made compared with 21 in the same period in the previous year. This represents a decrease of 62%. The numbers of proceedings has however remained steady and in line with other areas, it appears that other court orders are being made (for example SGO's) rather than placement and adoption orders.